

Refrigerator cabinet to preserve pharmaceutical and biological materials.

## Laboratory Refrigerator

MODEL	TEMPERATURE RANGE	SET POINT	CAPACITY (LITRES)	EXTERNAL DIMENSIONS (W x D x H cm)	DOOR TYPE
0090 NFP	+2°C ÷ +10°C	+4°C	350	90 x 64 x 140	Solid Door



**ACCURACY: 0.1°C - MICRO-PROCESSOR CONTROLLED**  
**Colour:** Gray, White or any RAL colour  
**Structure:** Internal and external S/S Steel Laminated Plate to guarantee a Bacteria-Static Activity  
**Insulation:** Polyurethane Foam, CFC FREE, 42Kg/m3, thick. 60mm  
**Refrigeration type:** Ventilated (NO-FROST)  
**Defrosting:** Automatic with condensing water evaporation  
**Electric power:** 1 / 210-240Volt / 50-60Hz  
**Electrical characteristics:** Short-Circuit Protection, Power Stabilizer with Linear Regulation of Voltage for not constant voltage (+/- 20 Volts)  
**Compressor:** No 1 Hermetic Type - 450Watt ,1/3 HP  
**Refrigerant gas:** R452a (R404a and R507a compatible)  
**Door:** : No 1 Glass Door  
**Inner setting:** 3 / 4 Shelves/Grids  
**Lighting:** NEON lamp active on opening door  
**Electronic controller:** Hi Efficiency display, res. 0,1°C  
**Castors and Wheels:** 4 Wheels + 2 adjustable feet

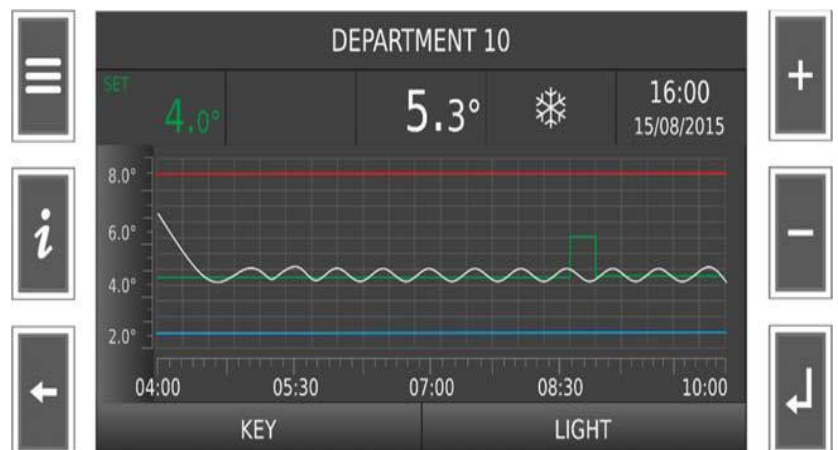
Visual and acoustic alarm for:

- High and low temperature
- Open door
- Devices failure
- Probes failures

### OPTIONAL:

DTLSD3 - Data Logger Touch Screen 5"  
 TC - Twin Compressor  
 SE / ESEDL - Manual or Electronic Lock with Password  
 UPS - Back-up Battery System  
 CHAUT - Self Closing Door  
 HELO - Hole for External Probe  
 LED - LED Lamp Inside  
 CS2 - Sliding Movable S/Steel Drawers  
 SH2 - Sliding Movable S/Steel Shelves  
 SMS - SMS Alarm System  
 WI-FI/3G-Connection to the Network for remote control online

### OPTION INTERACTIVE DIGITAL DATA LOGGER TOUCH SCREEN 5"



# TECHNICAL DRAWING

