

Medical Lab Refrigerator 2 Temp.

MODEL	TEMPERATURE RANGE	CAPACITY (LITRES)	EXTERNAL DIMENSIONS (W x D x H cm)	DOOR TYPE
2102 CB	+2°C ÷ +10°C / 0°C ÷ -25°C	100+100	46 x 64 x 204	Hinged Glass Doors



Colour: Gray, White or any RAL colour
Structure: Internal and external S/S Steel Laminated Plate to guarantee a Bacteria-Static Activity
Insulation: Polyurethane Foam, CFC FREE, 42Kg/m³, thickness 60mm
Refrigeration type: Ventilated (NO-FROST)
Defrosting: Automatic, condensing water evaporation
Electric power: 1 / 210-240Volt / 50-60Hz
Electrical characteristics: Shortage Protection with Power Stabilizer
Compressor: No 1 Hermetic Type - 400Watt , ½ HP
Refrigerant gas: R452a (R404a and R507a compatible)
Door: : No 2 Glass Door
Inner setting: 2+2 Shelves/Grids ; 2 compartments
Lighting: NEON lamp active on opening door
Elect. controller: High efficiency display, res.0,1°C
Castors and Wheels: 4 Wheels + 2 adjustable feet

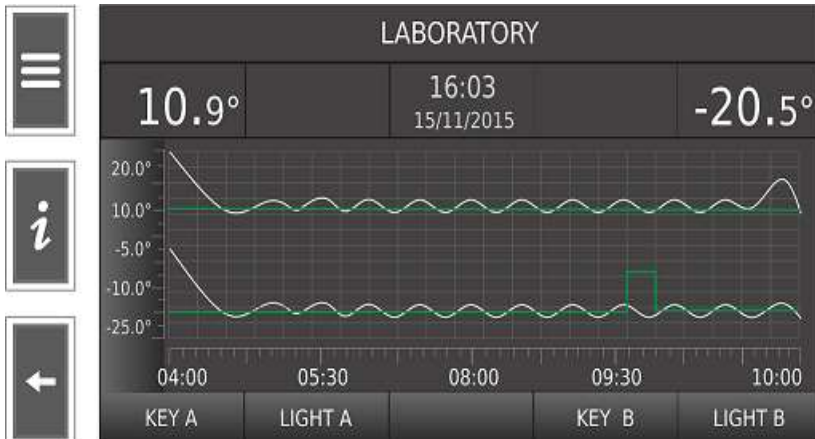
Visual and acoustic alarm for:

- Hi - Low temperature
- Open door
- Devices failure
- Probes failures

OPTIONAL:

- DTLSD3 (2T) - Data Logger Touch Screen 5"
- SE / ESEDL - Manual or Electronic Lock
- UPS - Back-up Battery System
- CHAUT - Self Closing Door
- HLO - Hole for External Probe
- LED - LED Lamp Inside
- CS1 / CS2 - Sliding Movable S/Steel Drawers
- SH1 / SH2 - Sliding Movable S/Steel Shelves
- WI-FI / 3G - Online connection system and monitoring
- SMS - SMS Alarm System
- S - Special Temperature (freezer), -30°C / -35°C

OPTION: INTERACTIVE DATA LOGGER TFT 5"



OPTION: SLIDING DRAWERS

