

Medical Refrigerator 2 Chambers/2 Temp.

MODEL	TEMPERATURE RANGE	SET POINT	CAPACITY (LITRES)	EXT. DIMENSIONS (W x D x H cm)	DOOR TYPE
MT 4000CB	0°C ÷ -25°C / +10°C ÷ +2°C	-20°C / +4°C	110+220	67 x 64 x 204	Solid



BACK-UP BATTERY Autonomy 36hrs – DRY CONTACT

Colour: Gray, White or any RAL colour
Structure: Internal and external Steel Laminated Plate with FINGER PRINT PROOF TECHNOLOGY™ to assure a Bacteria-Static Activity
Insulation: Polyurethane Foam, CFC FREE, 42Kg/m³, 70mm
Refrigeration type: Ventilated Forced Air (NO-FROST)
Defrosting: Automatic, condensing water evaporation
Electric power: 1 / 210-240Volt / 50-60Hz
Electrical characteristics: Shortage Protection with Power Stabilizer (±30 volts)
Compressor: No. 2 Hermetic – 200+200Watt – ½ HP ea.
Refrigerant gas: R452A (R404a and R507a compatible)
Door : No 2 GLASS or SOLID Doors
Inner setting: 1+4 or 3+3 Shelves/Grids ; 2 compartments
Lighting: NEON lamp active on opening door
Elect. controller: High efficiency display, Accuracy 0,1°C
Castors and Wheels: 4 Wheels + 2 adjustable feet

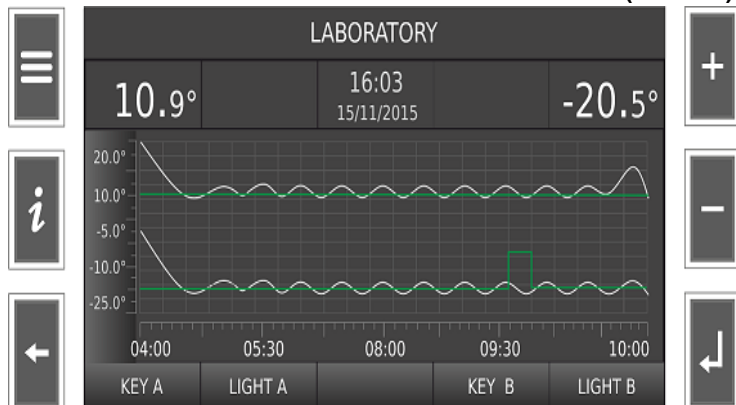
Main Visual and acoustic alarm for:

- Hi - Low temperature
- Open door
- Devices failure
- Probes failures

MAIN OPTIONS:

DTLSD3-2T – Interactive Data Logger TFT 5", RGB
 EASY – Data Logger with BLUETOOTH and WI-FI
 GR2 – Graphic Chart Recorder 2 T. with paper disks
 SE/ESEDL - Key or Electronic Lock with Password
 HLO – Insulated Hole for External Probe Ø 25 mm
 LED - LED Inside (standard with DTLSD3, EASY)
 CS1 - Sliding Aluminum or S/S Drawers
 SH1 - Sliding S/S Plane Shelves
 SMS - SMS Alarm System
 TR – Tropical Version, Temp. +48°C max, RH 92% Max
 WI-FI/3G – Remote connection, on-line monitoring
 WB – Steel Wire Baskets PVC Coated
 RS485 – Serial Port for BMS/PC Connection

INTERACTIVE DATA LOGGER TFT5" – RGB COLORS (DTLSD3)



SLIDING ALUMINUM DRAWER (CS1)



WIRE BASKETS (WB)

