

## REFRIGERATOR/FREEZER for Breast Milk

MODEL	TEMPERATURE RANGE	SET POINT	CAPACITY (LITRES)	EXT. DIMENSION (W x D x H cm)	DOOR TYPE
5010CB	0°C ÷ -25°C / +2°C ÷ +10°C	-20°C / +2°C	160+350	67 x 89 x 204	Solid/Glass Doors



**Dry Contact – Back-Up Battery 24/36hrs – Accuracy 0.1°C**

**Colour:** Grey, White or any RAL colour

**Structure:** Internal and Ext. Steel Laminated Plate FINGER PRINT FROOF TECHNOLOGY™ to assure a Bacteria-Static Activity

**Insulation:** Polyurethane 42Kg/mc, CFC FREE, thick. 70mm

**Refrigeration type:** Ventilated (NO-FROST)

**Defrosting:** Automatic, condensing water evaporation

**Electric power:** 1 / 210-240Volt / 50-60Hz

**Electrical characteristics:** Shortage Protection with Power Stabilizer for Power Peak of ± 25 volts

**Compressor:** No. 2 Hermetic Type – ½+½ HP – 450+450Watt

**Refrigerant gas:** R452a (compatible with R404a and R507a)

**Door:** No. 2 Solid or Glass Doors

**Inner setting:** 1+4 Shelves/Grids ; 2 Independent Comp.

**Lighting:** NEON lamp active on opening door

**Elect. controller:** High efficiency LCD display, HACCP Type

**Castors and Wheels:** 4 Swivel Wheels + 2 adjustable feet

**Main Visual and acoustic alarm for:**

- Hi - Low Temperature
- Open door
- Devices failure
- Probes failures

### MAIN OPTIONS:

DTLSD3 (2T) – Interactive Data Logger TFT 5", RGB col.

RG2 – Graphic Chart Recorder 2 Temperatures

SE / ESEDL - Manual or Electronic Lock

CHAUT - Self Closing Door (Fridge compartment)

HLO - Hole for External Probe Ø 25mm

LED - LED Light Inside High Brightness

CS2 - Sliding Drawers transparent front side

SH2 - Sliding Perforated or Plane S/Steel Shelves

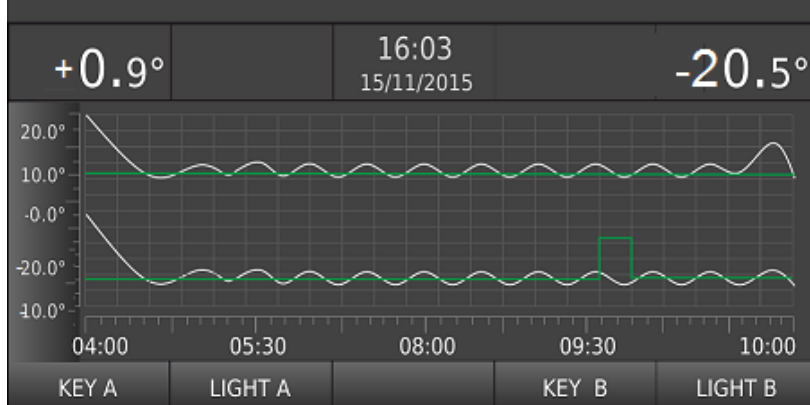
SMS - SMS Alarm System

WI-FI/3G – On-line connection and real time monitoring

RS485 – Serial Port for PC/BMS Connection

### INTERACTIVE DATA LOGGER TOUCH SCREEN 5" 2 TEMPERATURE (option)

NURSERY WARD 1



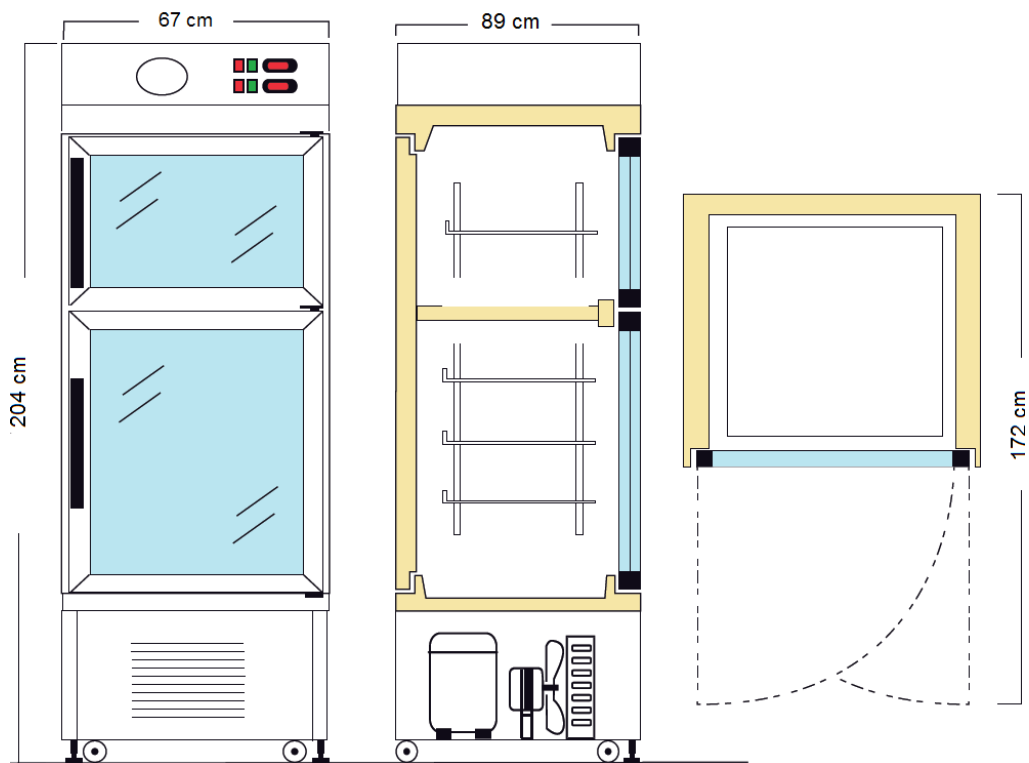
### INNER SETTING: GRIDS and S. LAMINATED PLATE OPTION: S/S AISI 304 or 316 Brushed



# OPTION INTERACTIVE DATA LOGGER TFT 5" - RGB COLORS - 2 TEMPERATURES



## INNER CONFIGURATIONS **STANDARD SET UP WITH GRIDS**



### **OPTIONS:**

#### **SLIDING S/S SHELVES**



#### **SLIDING ALUMINUM or S/S DRAWERS**

