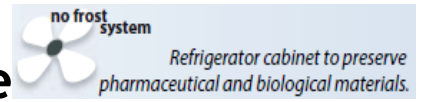


# REFRIGERATOR/FREEZER for Vaccine Storage



MODEL	TEMPERATURE RANGE	SET POINT	CAPACITY (LITRES)	EXT. DIMENSION (W x D x H cm)	DOOR TYPE
5010CB	0°C ÷ -25°C / +2°C ÷ +10°C	-20°C / +2°C	160+350	67 x 89 x 204	Solid/Glass Doors



**Dry Contact – Back-Up Battery 36/48hrs – Accuracy 0.1°C**

- Colour:** Grey, White or any RAL colour
- Structure:** Internal and Ext. Steel Laminated Plate FINGER PRINT FROOF TECHNOLOGY™ to assure a Bacteria-Static Activity
- Insulation:** Polyurethane 42Kg/mc, CFC FREE, thick. 70mm
- Refrigeration type:** Ventilated (NO-FROST)
- Defrosting:** Automatic, condensing water evaporation
- Electric power:** 1 / 210-240Volt / 50-60Hz
- Electrical characteristics:** Shortage Protection with Power Stabilizer for Power Peak of ± 25 volts
- Compressor:** No. 1 Hermetic Type – ¾ HP – 750Watt
- Refrigerant gas:** R452a (R404a and R507a compatible)
- Door:** No. 2 Solid or Glass Doors
- Inner setting:** 1+4 Shelves/Grids ; 2 Independent Comp.
- Lighting:** NEON lamp active on opening door
- Elect. controller:** High efficiency LCD display, HACCP Type
- Castors and Wheels:** 4 Swivel Wheels + 2 adjustable feet

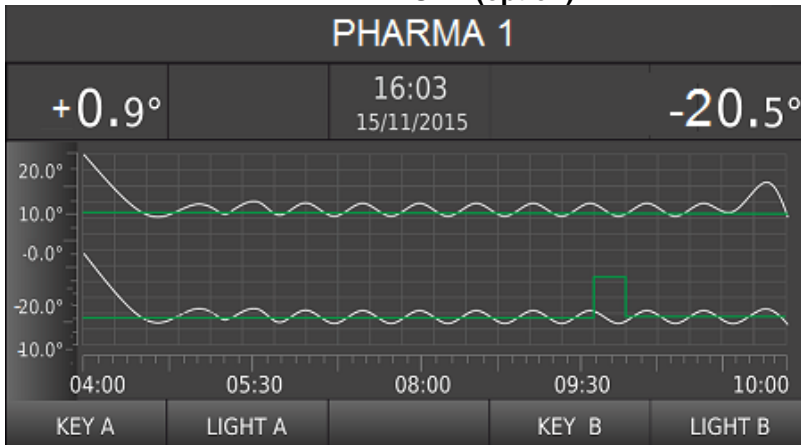
**Main Visual and acoustic alarm for:**

- Hi - Low Temperature
- Open door
- Devices failure
- Probes failures

**MAIN OPTIONS:**

- DTLSD3 (2T) – Interactive Data Logger TFT 5", RGB col.
- RG2 – Graphic Chart Recorder 2 Temperatures
- SE / ESEDL - Manual or Electronic Lock
- CHAUT - Self Closing Door (Fridge compartment)
- HLO - Hole for External Probe Ø 25mm
- LED - LED Light Inside High Brightness
- CS2 - Sliding Drawers transparent front side
- SH2 - Sliding Perforated or Plane S/Steel Shelves
- SMS - SMS Alarm System
- WI-FI/3G – On-line connection and real time monitoring
- RS485 – Serial Port for PC/BMS Connection

**INTERACTIVE DATA LOGGER TFT 5", RGB Colors  
2 TEMPERATURE (option)**



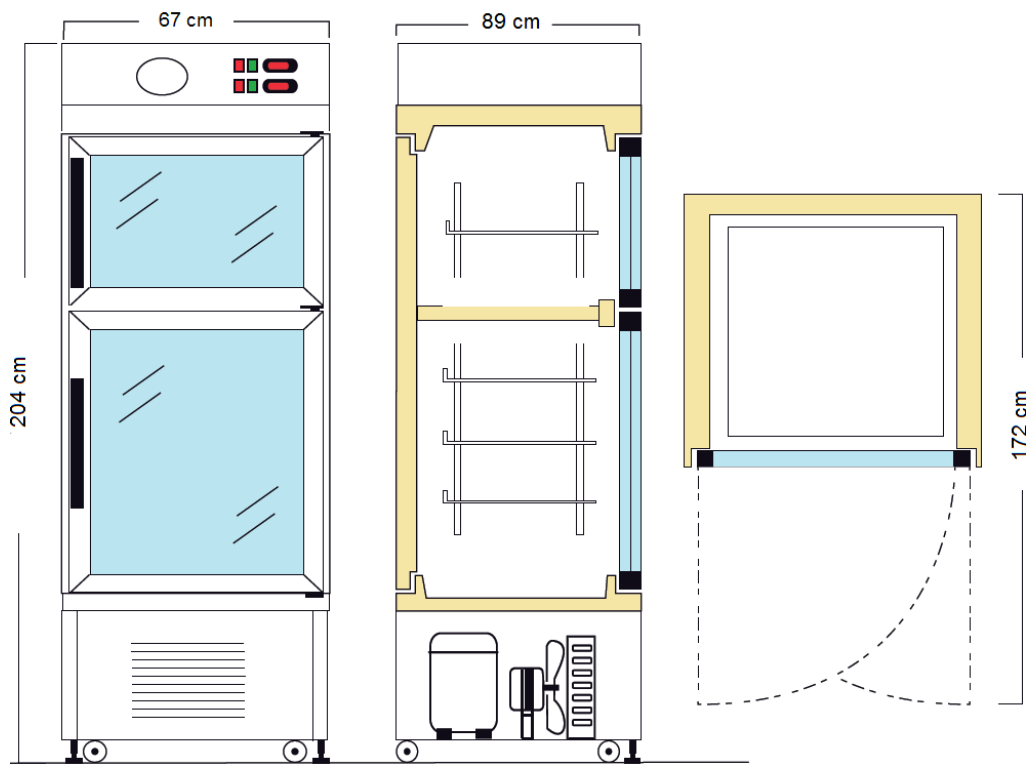
**INNER SETTING: GRIDS and S. LAMINATED PLATE  
OPTION: S/S BA Mirrored or AISI 304 Scotch Brite**



# OPTION INTERACTIVE DATA LOGGER TFT 5"- RGB COLORS - 2 TEMPERATURES



## INNER CONFIGURATIONS **STANDARD SET UP WITH GRIDS**



### OPTIONS:

#### **SLIDING S/S SHELVES**



#### **SLIDING ALUMINUM or S/S DRAWERS**

