

## Combined Medical Refrigerator 2T

MODEL	TEMPERATURE RANGE	SET POINT	CAPACITY (LITRES)	EXT. DIMENSIONS (W x D x H cm)	DOOR TYPE
5020CB	+2°C ÷ +10°C / +2°C ÷ +10°C	+4°C / +4°C	320+320	83 x 89 x 204	Two Glass Doors



### DRY CONTACT – BACK-UP BATTERY 24hrs

**Colour:** Gray, White or any RAL colour  
**Structure:** Internal and external S/S Steel Laminated Plate to guarantee a Bacteria-Static Activity  
**Insulation:** Polyurethane Foam, CFC FREE, 42Kg/m3, thickness 80mm  
**Refrigeration type:** Ventilated (NO-FROST)  
**Defrosting:** Automatic, condensing water evaporation  
**Electric power:** 1 / 210-240Volt / 50-60Hz  
**Electrical characteristics:** Shortage Protection with Power Stabilizer  
**Compressor:** No 1 Hermetic Type - 900Watt – 1 HP  
**Refrigerant gas:** R452a (R507a and R404a compatible)  
**Door:** : No 2 Solid or Glass Doors  
**Inner setting:** 1+4 Shelves/Grids ; 2 compartments  
**Lighting:** NEON lamp active on opening door  
**Elect. controller:** High efficiency display, res.0,1°C  
**Castors and Wheels:** 4 Wheels + 2 adjustable feet  
**ACCURACY:** 0.1°C

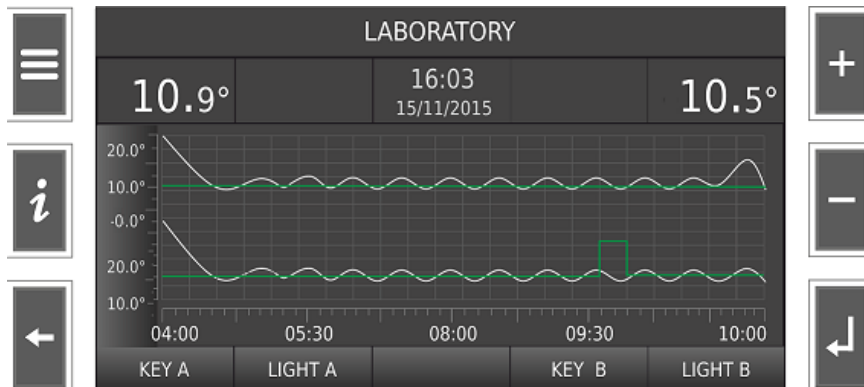
**Visual and acoustic alarm for:**

- HI - LOW temperature
- Open door
- Device and components failure
- Probes failures

### OPTIONAL:

DTLD3 (2T) - Data Logger Touch Screen 5"  
 SE / ESEDL - Manual or Electronic Lock  
 UPS - Back-up Battery System  
 CHAUT - Self Closing Door (Fridge compartment)  
 HELO - Hole for External Probe  
 LED - LED Light Inside  
 CS1 / CS2 - Sliding Movable S/Steel Drawers  
 SH1 / SH2 - Sliding Movable S/Steel Shelves  
 SMS - SMS Alarm System  
 WI-FI/3G – On-line Connection, Monitoring and Remote error messages

### DIGITAL DATA LOGGER TOUCH SCREEN 5" TWO TEMPERATURE



### ADJUSTABLE GRIDS AND S/STEEL LAM. PLATE

