

Medical Lab Refrigerator 2 Temperatures

MODEL	TEMPERATURE RANGE	SET POINT	CAPACITY (LITRES)	EXT. DIMENSION (W x D x H cm)	DOOR TYPE
5020CB	0°C ÷ -25°C / +2°C ÷ +10°C	-20°C / +4°C	200+440	83 x 89 x 204	Solid/Glass Doors



Dry Contact – Back-Up Battery 24/36hrs – Accuracy 0.1°C

Colour: Grey, White or any RAL colour

Structure: Internal and Ext. Steel Laminated Plate FINGER PRINT FROOF TECHNOLOGY™ to assure a Bacteria-Static Activity

Insulation: Polyurethane 42Kg/mc, CFC FREE, thick. 70mm

Refrigeration type: Ventilated (NO-FROST)

Defrosting: Automatic, condensing water evaporation

Electric power: 1 / 210-240Volt / 50-60Hz

Electrical characteristics: Shortage Protection with Power Stabilizer for Power Peak of ± 25 volts

Compressor: No. 2 Hermetic Type – ½+½ HP – 450+450Watt

Refrigerant gas: R452a (compatible with R404a and R507a)

Door: No. 2 Solid or Glass Doors

Inner setting: 1+4 Shelves/Grids ; 2 Independent Comp.

Lighting: NEON lamp active on opening door

Elect. controller: High efficiency LCD display, HACCP Type

Castors and Wheels: 4 Swivel Wheels + 2 adjustable feet

Main Visual and acoustic alarm for:

- Hi - Low Temperature
- Open door
- Devices failure
- Probes failures

MAIN OPTIONS:

DTLSD3 (2T) – Interactive Data Logger Touch Screen 5"

RG2 – Graphic Chart Recorder 2 Temperatures

SE / ESEDL - Manual or Electronic Lock

CHAUT - Self Closing Door (Fridge compartment)

HLO - Hole for External Probe Ø 25mm

LED - LED Light Inside High Brightness

CS2 - Sliding Drawers transparent front side

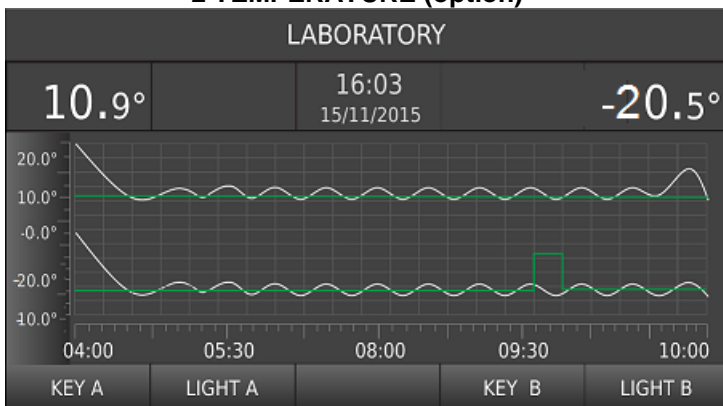
SH2 - Sliding Perforated or Plane S/Steel Shelves

SMS - SMS Alarm System

WI-FI/3G – On-line connection and real time monitoring

S - Special Temperature (freezer), -35°C

INTERACTIVE DATA LOGGER TOUCH SCREEN 5" 2 TEMPERATURE (option)



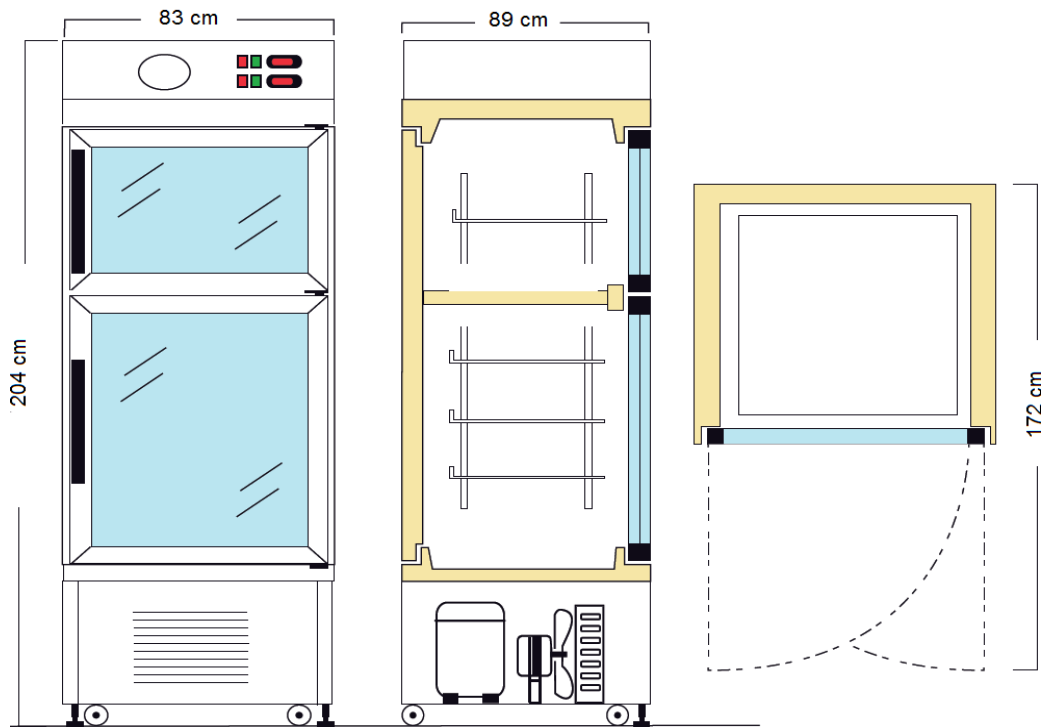
INNER SETTING: GRIDS and S. LAMINATED PLATE



OPTION INTERACTIVE DATA LOGGER TFT 5" - RGB COLORS - 2 TEMPERATURES



INNER CONFIGURATIONS **STANDARD SET UP WITH GRIDS**



OPTIONS:

SLIDING S/S SHELVES



SLIDING ALUMINUM or S/S DRAWERS

