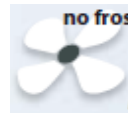


**no frost system**  
 Refrigerator cabinet to preserve pharmaceutical and biological materials.

## Medical Refrigerator 2 Temperatures

MODEL	TEMPERATURE RANGE	CAPACITY (LITRES)	EXTERNAL DIMENSIONS (W x D x H cm)	DOOR TYPE
5030 CB	0°C ÷ -25°C / +2°C ÷ +10°C	385+385	95 x 89 x 204	Glass or Solid Doors



**Colour:** Gray, White or any RAL colour  
**Structure:** Internal and external S/S Steel Laminated Plate to guarantee a Bacteria-Static Activity  
**Insulation:** Polyurethane Foam, CFC FREE, 42Kg/m3, thickness 90mm  
**Refrigeration type:** Ventilated (NO-FROST)  
**Defrosting:** Automatic, condensing water evaporation  
**Electric power:** 1 / 210-240Volt / 50-60Hz  
**Electrical characteristics:** Shortage Protection with Power Stabilizer  
**Compressor:** nr.1 Hermetic Type - 900Watt  
**Refrigerant gas:** R452a (R404a and R507a compatible)  
**Door:** : Nr 2 Solid or Glass Doors  
**Inner setting:** 1+4 Shelves/Grids ; 2 compartments  
**Lighting:** NEON lamp active on opening door  
**Elect. controller:** High efficiency display, res.0,1°C  
**Castors and Wheels:** 4 Wheels + 2 adjustable feet

**Visual and acoustic alarm for:**

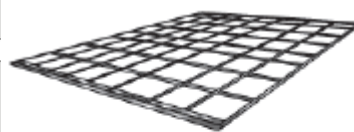
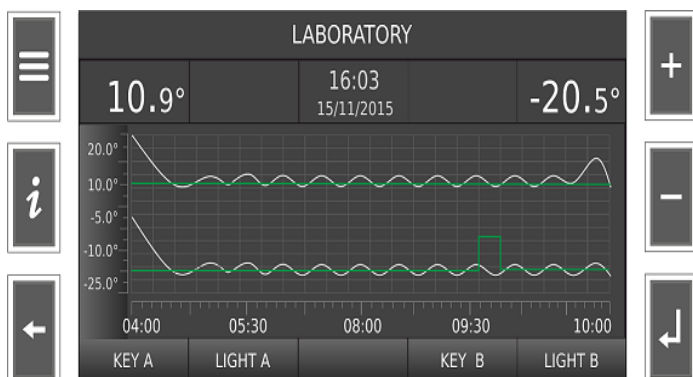
- Hi - Low temperature
- Open door
- Devices failure
- Probes failures

### OPTIONAL:

DTLD3 (2T) - Data Logger Touch Screen 5"  
 SE / ESEDL - Manual or Electronic Lock  
 UPS - Back-up Battery System  
 CHAUT - Self Closing Door (Fridge compartment)  
 HELO - Hole for External Probe  
 LED - LED Light Inside  
 CS1 / CS2 - Sliding Movable S/Steel Drawers  
 SH1 / SH2 - Sliding Movable S/Steel Shelves  
 SMS - SMS Alarm System  
 S - Special Temperature (freezer), -30°C / -35°C

DIGITAL DATA LOGGER TOUCH SCREEN 5"  
2 TEMPERATURE

INNER SETTING: GRIDS AND SLIDING DRAWERS



Assetto interno con ripiani a griglia e supporti  
 Inner settings grid shelves with supports

