

**no frost system**  
 Refrigerator cabinet to preserve pharmaceutical and biological materials.

## Medical Refrigerator 2 Temperatures

MODEL	TEMPERATURE RANGE	SET POINT	CAPACITY (LITRES)	EXTERNAL DIMENSION (W x D x H cm)	DOOR TYPE
5030CB	0°C ÷ -25°C / +2°C ÷ +10°C	-20°C / +4°C	235+530	95 x 89 x 204	Glass Doors



**DRY CONTACT – UPS (Back-up 24hrs) – Accuracy: 0.1°C**  
**Colour:** Grey, White or any RAL colour  
**Structure:** Internal and external S/S Steel Laminated Plate to guarantee a Bacteria-Static Activity  
**Insulation:** Polyurethane Foam, CFC FREE, 42Kg/m3, thickness 80mm  
**Refrigeration type:** Ventilated (NO-FROST)  
**Defrosting:** Automatic, condensing water evaporation  
**Electric power:** 1 / 210-240Volt / 50-60Hz  
**Electrical characteristics:** Shortage Protection with Power Stabilizer  
**Compressor:** No.1 Hermetic Type – 1 HP - 900Watt  
**Refrigerant gas:** R452a (R507a and R404a compatible)  
**Door:** : No 2 Solid or Glass Doors  
**Inner setting:** 1+4 Shelves/Grids ; 2 Independent Comp.  
**Lighting:** NEON lamp active on opening door  
**Elect. controller:** High efficiency display, res.0,1°C  
**Castors and Wheels:** 4 Wheels + 2 adjustable feet

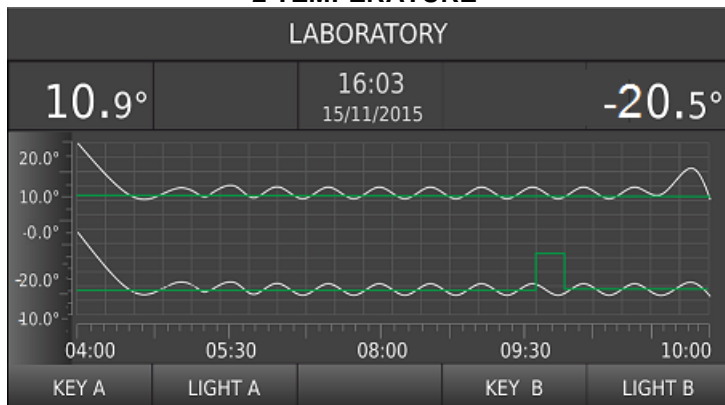
**Visual and acoustic alarm for:**

- Hi - Low temperature
- Open door
- Devices failure
- Probes failures

**OPTIONAL:**

DTLD3 (2T) - Data Logger Touch Screen 5"  
 SE / ESEDL - Manual or Electronic Lock  
 CHAUT - Self Closing Door (Fridge compartment)  
 HELO - Hole for External Probe  
 LED - LED Light Inside  
 CS2 - Sliding Movable S/Steel Drawers  
 SH2 - Sliding Movable S/Steel Shelves  
 SMS - SMS Alarm System  
 WI-FI/3G – On-line connection and real time monitoring  
 S - Special Temperature (freezer), -30°C / -35°C

**DIGITAL DATA LOGGER TOUCH SCREEN 5" 2 TEMPERATURE**



**INNER SETTING: GRIDS AND S/STEEL LAMINATED PLATE**

